



Die Grinder Range

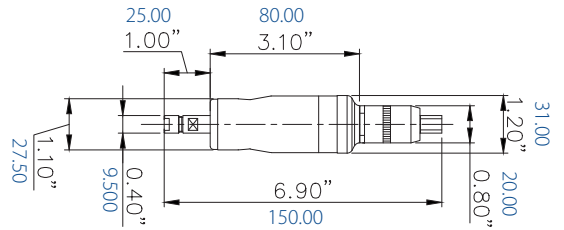
www.atagroup.co



DIE GRINDER



DIE GRINDER Turbine Pencil Grinder - ST100



Model	ST100
Speed (rpm)	100,000
Power (hp)	0.06
Power (Watt)	40
Weight (Kg)	0.24
Weight (lb)	0.53
Air consumption (m3/min)	0.17
Air consumption (cfm)	6.00
Noise level (db.(A))	62
Standard Collet Size Metric	3
Collet Options - Metric	2.34mm
Standard Collet Size - Imperial	1/8"
Collet Options - Imperial	3/32"
Exhaust type	Front
Lever type	Roll
Recommended Consumables	
Tungsten Carbide Burs	3mm - 1/8"
Abrasives	Mounted points

FEATURES & BENEFITS

- Oil free-No contamination
- High speed-Fine finish
- Small diameter facilitates precise control
- Minimal tools required for stripping
- Ergo sleeve fitted for operator comfort



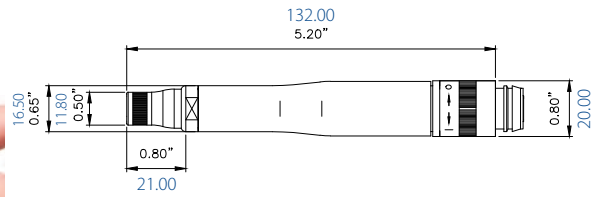
Accessories	Part Number
Spanner	25510100
Hose	17701020



Ordering Information

For more information and / or to place an order, please contact ATA Customer Service Internationally +353 (0) 49 432 6178 or by email sales@atagroup.ie or the UK +44 (0) 1530 261 145, email sales@atagroupuk.com or US +1 330-928-7744, email sales@atataools.com

DIE GRINDER Pencil Grinder - SP Line



Model	SP75R	SP60R	SP45R
Speed (rpm)	75,000	60,000	45,000
Power (hp)	0.15	0.15	0.20
Power (Watt)	110	110	110
Weight (Kg)	0.15	0.15	0.15
Weight (lb)	0.33	0.33	0.33
Air consumption (m3/min)	0.20	0.20	0.20
Air consumption (cfm)	7.06	7.06	7.06
Noise level (db.(A))	66	63	60
Standard collet (mm)	3	3	3
Collet options (mm)	2.34mm	2.34mm	2.34mm
Standard collet (")	1/8"	1/8"	1/8"
Collet options (")	3/32"	3/32"	3/32"
Exhaust type	Rear	Rear	Rear
Lever type	Roll	Roll	Roll

FEATURES & BENEFITS

- Slim body design-for intricate work
- High speed-fine finish
- Small diameter facilitates precise control
- Removable collet guard
- Collet guard for improved control & spindle protection



Recommended Consumables	
Tungsten Carbide Burs	3mm - 1/8"
Abrasives	Mounted points



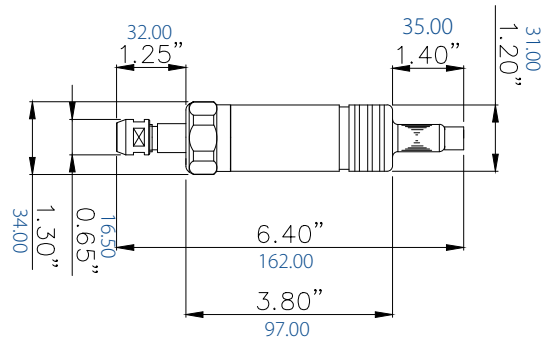
Accessories	Part Number
Spanner	25510100
Hose	17701020
Over hose	17710620
Hose Set	17701220



Ordering Information

For more information and / or to place an order, please contact ATA Customer Service Internationally +353 (0) 49 432 6178 or by email sales@atagroup.ie or the UK +44 (0) 1530 261 145, email sales@atagroupuk.com or US +1 330-928-7744, email sales@atatools.com

DIE GRINDER High Speed Grinder S50



Model	S50
Speed (rpm)	50,000
Power (hp)	0.25
Power (Watt)	190
Weight (Kg)	0.36
Weight (lb)	0.79
Air consumption (m3/min)	0.45
Air consumption (cfm)	15.89
Noise level (db(A))	70
Standard Collet Size Metric	6
Collet Options - Metric	3
Standard Collet Size - Imperial	1/4"
Collet Options - Imperial	1/8"
Exhaust type	Front
Lever type	Push pull
Recommended Consumables	
Tungsten Carbide Burs	3 to 8mm - 1/8" to 5/16"
Abrasives	Mounted points

FEATURES & BENEFITS

- Compact design for heavy deburring
- Push pull throttle for continuous running
- Powerful motor for grinding and polishing



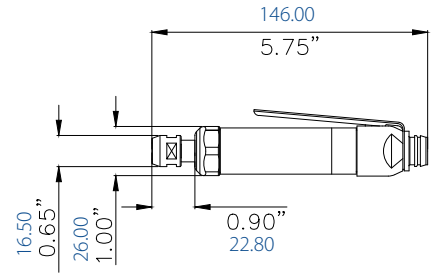
Accessories	Part Number
Spanner	25546200
Spanner	25561110
Hose	17731420
Over hose	17794520
Hose Set	17711020



Ordering Information

For more information and / or to place an order, please contact ATA Customer Service Internationally +353 (0) 49 432 6178 or by email sales@atagroup.ie or the UK +44 (0) 1530 261 145, email sales@atagroupuk.com or US +1 330-928-7744, email sales@atatools.com

DIE GRINDER High Speed Die Grinder - SD45LR



Model	SD45LR
Speed (rpm)	45,000
Power (hp)	0.20
Power (Watt)	150
Weight (Kg)	0.24
Weight (lb)	0.53
Air consumption (m ³ /min)	0.23
Air consumption (cfm)	8.12
Noise level (db.(A))	64
Standard Collet Size Metric	6
Collet Options - Metric	3
Standard Collet Size - Imperial	1/4"
Collet Options - Imperial	1/8"
Exhaust type	Rear
Lever type	Simple lever
Recommended Consumables	
Tungsten Carbide Burs	3 to 8mm - 1/8" to 5/16"
Abrasives	Mounted points

FEATURES & BENEFITS

- Powerful for digging out defects
- Simple lever operation best for where use is not continuous
- Ergo sleeve fitted for operator comfort



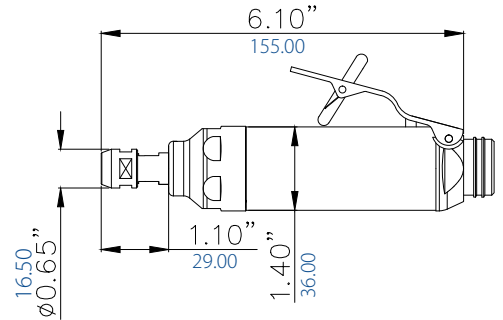
Accessories	Part Number
Spanner	25546200
Spanner	25561110
Hose	17701020
Over hose	17710620
Hose Set	17701220



Ordering Information

For more information and / or to place an order, please contact ATA Customer Service Internationally +353 (0) 49 432 6178 or by email sales@atagroup.ie or the UK +44 (0) 1530 261 145, email sales@atagroupuk.com or US +1 330-928-7744, email sales@atataools.com

DIE GRINDER High Speed Die Grinder - SD Line



Model	SD37L	SD30L	SD26L	SD37LR	SD30LR	SD26LR
Speed (rpm)	37,000	30,000	25,000	37,000	30,000	25,000
Power (hp)	0.40	0.40	0.40	0.40	0.40	0.40
Power (Watt)	300	300	300	300	300	300
Weight (Kg)	0.46	0.46	0.46	0.46	0.46	0.46
Weight (lb)	1.01	1.01	1.01	1.01	1.01	1.01
Air consumption (m ³ /min)	0.57	0.57	0.57	0.57	0.57	0.57
Air consumption (cfm)	20.13	20.13	20.13	20.13	20.13	20.13
Noise level (db.(A))	75	73	72	74	73	72
Standard collet (mm)	6	6	6	6	6	6
Collet options (mm)	3	3	3	3	3	3
Standard collet (")	1/4"	1/4"	1/4"	1/4"	1/4"	1/4"
Collet options (")	1/8"	1/8"	1/8"	1/8"	1/8"	1/8"
Exhaust type	Front	Front	Front	Rear	Rear	Rear
Lever type	Safety lever	Safety lever	Safety lever	Safety lever	Safety lever	Safety lever

Recommended Consumables	
Tungsten Carbide Burs	3mm to 12mm - 1/8" to 1/2"
Abrasives	Mounted points



Accessories	Part Number
Spanner	25546200
Spanner	25561110
Hose	17731420
Over hose	17794520
Hose Set	17711020

FEATURES & BENEFITS

- Excellent power/weight ratio
- Used for general de-burring, grinding & polishing
- Compact design suitable for light to medium de-burring applications
- Ergo sleeve fitted for operator comfort



Ordering Information

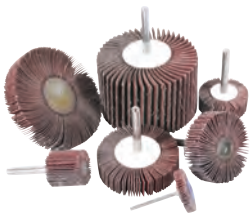
For more information and / or to place an order, please contact ATA Customer Service Internationally +353 (0) 49 432 6178 or by email sales@atagroup.ie or the UK +44 (0) 1530 261 145, email sales@atagroupuk.com or US +1 330-928-7744, email sales@atataools.com

DIE GRINDER High Speed Die Grinder - P25/2



Model	P25/2
Speed (rpm)	25,000
Power (hp)	0.50
Power (Watt)	375
Weight (Kg)	0.60
Weight (lb)	1.32
Air consumption (m3/min)	0.60
Air consumption (cfm)	21.19
Noise level (db.(A))	80
Standard Collet Size Metric	6
Collet Options - Metric	3, 8 & 10
Standard Collet Size - Imperial	1/4"
Collet Options - Imperial	1/8", 3/8"
Exhaust type	Front
Lever type	Safety lever

Recommended Consumables	
Tungsten Carbide Burs	10 & 12mm - 3/8" & 1/2"
Abrasives	Mounted points/Flap wheels/Bands



FEATURES & BENEFITS

- Excellent power/weight ratio
- One handed operation suitable for general de burring
- Compact design suitable for light to medium de burring applications



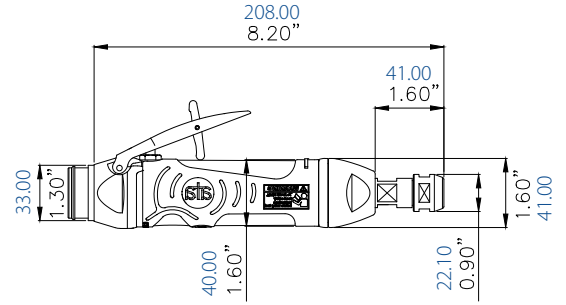
Accessories	Part Number
Spanner	25561210
Spanner	25561110
Hose	17731420
Over house	17794520
Hose Set	17711020



Ordering Information

For more information and / or to place an order, please contact ATA Customer Service Internationally +353 (0) 49 432 6178 or by email sales@atagroup.ie or the UK +44 (0) 1530 261 145, email sales@atagroupuk.com or US +1 330-928-7744, email sales@atatools.com

DIE GRINDER High Power Die Grinder - SM Line



Model	SM25L-CA	SM16L-CA	SM10L-CA	SM25LR-CA	SM16LR-CA	SM10LR-CA
Speed (rpm)	25,000	16,000	10,000	25,000	16,000	10,000
Power (hp)	1.10	1.10	1.10	1.10	1.10	1.10
Power (Watt)	820	820	820	820	820	820
Weight (Kg)	0.75	0.75	0.75	0.73	0.73	0.73
Weight (lb)	1.65	1.65	1.65	1.61	1.61	1.61
Air consumption (m3/min)	0.62	0.62	0.62	0.62	0.62	0.62
Air consumption (cfm)	21.89	21.89	21.89	21.89	21.89	21.89
Noise level (db.(A))	74	77	78	74	75	77
Standard collet (mm)	6	6	6	6	6	6
Collet options (mm)	3,8,10	3,8,10	3,8,10	3,8,10	3,8,10	3,8,10
Standard collet (")	1/4"	1/4"	1/4"	1/4"	1/4"	1/4"
Collet options (")	1/8", 3/8"	1/8", 3/8"	1/8", 3/8"	1/8", 3/8"	1/8", 3/8"	1/8", 3/8"
Exhaust type	Front	Front	Front	Rear	Rear	Rear
Lever type	Safety lever	Safety lever	Safety lever	Safety lever	Safety lever	Safety lever

Recommended Consumables	
Tungsten Carbide Burs	12 & 15mm - 1/2" & 9/16"
Abrasives	Mounted points/ Flap wheels/ Bands



Accessories	Part Number
Spanner	25561210
Spanner	25500510
Hose	17712120
Over hose	17795020
Hose Set	17711020

FEATURES & BENEFITS

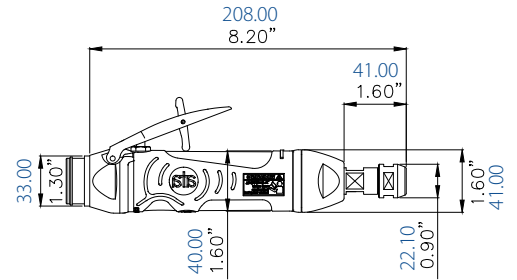
- Motor - more power less consumption
- Throttle valve for smoother start up action
- New moulded sleeve for improved ergonomics - operator comfort & insulation
- Ergonomically designed lever construction



Ordering Information

For more information and / or to place an order, please contact ATA Customer Service Internationally +353 (0) 49 432 6178 or by email sales@atagroup.ie or the UK +44 (0) 1530 261 145, email sales@atagroupuk.com or US +1 330-928-7744, email sales@atatools.com

DIE GRINDER Low Vibration Die Grinder - SMD Line



Model	SMD25LR-CA	SMD18LR-CA
Speed (rpm)	25,000	18,000
Power (hp)	1.10	1.10
Power (Watt)	820	820
Weight (Kg)	0.80	0.80
Weight (lb)	1.76	1.76
Air consumption (m ³ /min)	0.62	0.62
Air consumption (cfm)	21.89	21.89
Noise level (db(A))	77	75
Standard collet (mm)	6	6
Collet options (mm)	3,8,10	3,8,10
Standard collet (")	1/4"	1/4"
Collet options (")	1/8", 3/8"	1/8", 3/8"
Exhaust type	Rear	Rear
Lever type	Safety lever	Safety lever

FEATURES & BENEFITS

- Unique anti-vibration dampening system
- Throttle valve for smoother start up action
- Moulded sleeve for improved ergonomics - operator comfort & insulation
- Ergonomically designed lever construction
- Governor design offering a range of speeds



Recommended Consumables	
Tungsten Carbide Burs	12 to 15mm / 1/2" to 9/16"



Accessories	Part Number
Spanner	25561210
Spanner	25500510
Hose	17712120
Over hose	17795020

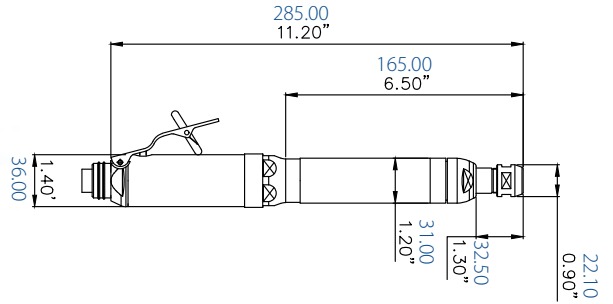


Ordering Information

For more information and / or to place an order, please contact ATA Customer Service Internationally +353 (0) 49 432 6178 or by email sales@atagroup.ie or the UK +44 (0) 1530 261 145, email sales@atagroupuk.com or US +1 330-928-7744, email sales@atatools.com



DIE GRINDER Extended Spindle Die Grinder - SDX Line



Model	SDX37LR	SDX30LR	SDX26LR
Speed (rpm)	37,000	30,000	25,000
Power (hp)	0.40	0.40	0.40
Power (Watt)	300	300	300
Weight (Kg)	0.80	0.80	0.80
Weight (lb)	1.76	1.76	1.76
Air consumption (m ³ /min)	0.57	0.57	0.57
Air consumption (cfm)	20.13	20.13	20.13
Noise level (db.(A))	74	73	72
Standard collet (mm)	6	6	6
Collet options (mm)	3,8,10	3,8,10	3,8,10
Standard collet (")	1/4"	1/4"	1/4"
Collet options (")	1/8", 3/8"	1/8", 3/8"	1/8", 3/8"
Exhaust type	Rear	Rear	Rear
Lever type	Safety lever	Safety lever	Safety lever

FEATURES & BENEFITS

- Double handed-for comfort /control & precision
- Excellent power/weight ratio
- Two handed grip gives good control over the process
- Suitable for a range of light grinding applications
- Ergo sleeves fitted for operator comfort



Recommended Consumables	
Tungsten Carbide Burs	3mm to 12mm - 1/8" to 1/2"
Abrasives	Mounted points/Flap wheels/Bands



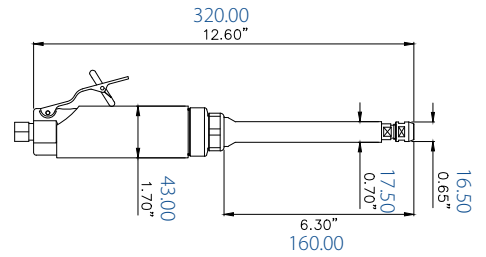
Accessories	Part Number
Spanner	25561210
Spanner	25561110
Hose	17712120
Over hose	17794520
Hose Set	14411420



Ordering Information

For more information and / or to place an order, please contact ATA Customer Service Internationally +353 (0) 49 432 6178 or by email sales@atagroup.ie or the UK +44 (0) 1530 261 145, email sales@atagroupuk.com or US +1 330-928-7744, email sales@atatools.com

DIE GRINDER Extended Spindle Die Grinder - SX Line



Model	SX22LR	SX16LR	SX10LR
Speed (rpm)	22,000	16,000	10,000
Power (hp)	0.85	0.85	0.85
Power (Watt)	630	630	630
Weight (Kg)	1.17	1.17	1.17
Weight (lb)	2.57	2.57	2.57
Air consumption (m ³ /min)	0.85	0.85	0.85
Air consumption (cfm)	30.01	30.01	30.01
Noise level (db.(A))	70	65	64
Standard collet (mm)	6	6	6
Collet options (mm)	3,8,10	3,8,10	3,8,10
Standard collet (")	1/4"	1/4"	1/4"
Collet options (")	1/8", 3/8"	1/8", 3/8"	1/8", 3/8"
Exhaust type	Rear	Rear	Rear
Lever type	Safety lever	Safety lever	Safety lever

FEATURES & BENEFITS

- Extended spindle for access in restricted areas
- Small diameter spindle for restricted access applications
- Spindle protected from work piece by spindle housing
- Ergo sleeve fitted for operator comfort



Recommended Consumables	
Tungsten Carbide Burs	15 to 20mm 9/16" to 13/16"
Abrasives	Mounted points



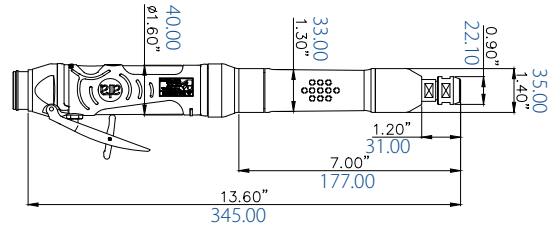
Accessories	Part Number
Spanner	25561110
Spanner	25546210
Hose	17731420
Over hose	17794520
Hose Set	17711020



Ordering Information

For more information and / or to place an order, please contact ATA Customer Service Internationally +353 (0) 49 432 6178 or by email sales@atagroup.ie or the UK +44 (0) 1530 261 145, email sales@atagroupuk.com or US +1 330-928-7744, email sales@atatools.com

DIE GRINDER Extended Body Die Grinder - SMX Line



Model	SMX25L	SMX16L	SMX10L	SMX25LR	SMX16LR	SMX10LR
Speed (rpm)	25,000	16,000	10,000	25,000	16,000	10,000
Power (hp)	1.10	1.10	1.10	1.10	1.10	1.10
Power (Watt)	820	820	820	820	820	820
Weight (Kg)	1.30	1.30	1.30	1.30	1.30	1.30
Weight (lb)	2.86	2.86	2.86	2.86	2.86	2.86
Air consumption (m3/min)	0.62	0.62	0.62	0.62	0.62	0.62
Air consumption (cfm)	21.89	21.89	21.89	21.89	21.89	21.89
Noise level (db.(A))	78	77	74	77	75	74
Standard collet (mm)	6	6	6	6	6	6
Collet options (mm)	3,8,10	3,8,10	3,8,10	3,8,10	3,8,10	3,8,10
Standard collet (")	1/4"	1/4"	1/4"	1/4"	1/4"	1/4"
Collet options (")	1/8", 3/8"	1/8", 3/8"	1/8", 3/8"	1/8", 3/8"	1/8", 3/8"	1/8", 3/8"
Exhaust type	Front	Front	Front	Rear	Rear	Rear
Lever type	Safety lever	Safety lever	Safety lever	Safety lever	Safety lever	Safety lever

Recommended Consumables	
Tungsten Carbide Burs	15, 20 & 25mm 9/16", 13/16" & 1"
Abrasives	Mounted points, flap wheels, bands



Accessories	Part Number
Spanner	25561210
Spanner	25561110
Hose	17712120

FEATURES & BENEFITS

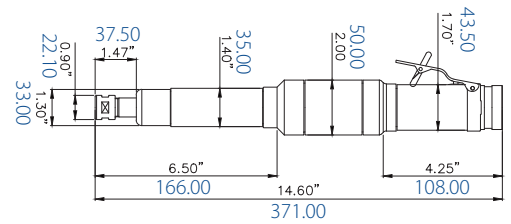
- Spider coupling-Improved transmission strength
- Motor-more power less consumption
- Throttle valve for smoother start up action
- Ergonomically designed lever construction
- Governor design offering a range of speeds



Ordering Information

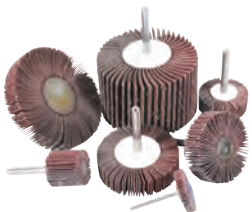
For more information and / or to place an order, please contact ATA Customer Service Internationally +353 (0) 49 432 6178 or by email sales@atagroup.ie or the UK +44 (0) 1530 261 145, email sales@atagroupuk.com or US +1 330-928-7744, email sales@atataools.com

DIE GRINDER Horizontal Die Grinder - SHG18LR



Model	SHG18LR
Speed (rpm)	18,000
Power (hp)	1.50
Power (Watt)	1100
Weight (Kg)	2.50
Weight (lb)	5.50
Air consumption (m3/min)	1.13
Air consumption (cfm)	39.90
Noise level (db.(A))	70
Standard Collet Size Metric	6
Collet Options - Metric	3,8,10
Standard Collet Size - Imperial	1/4"
Collet Options - Imperial	1/8", 3/8"
Exhaust type	Rear
Lever type	Safety lever

Recommended Consumables	
Tungsten Carbide Burs	15 & 20mm - 9/16" & 13/16"
Abrasives	Flap wheel/Large abrasives wheels



Accessories	Part Number
Spanner	25561210
Spanner	25561110
Hose	17700320
Over hose	17700520
Hose Set	17711020



FEATURES & BENEFITS

- High power/weight ratio compared with high cycle grinders
- Double handed operation for improved control
- Robust for heavy duty applications
- Suitable for use with 15mm tungsten carbide burs
- Ergo sleeve fitted for operator comfort





NOTES



Lined area for notes.



International Offices

t: +353 (0) 49 432 6178
f: +353 (0) 49 432 6278

e: sales@atagroup.ie
w: www.atagroup.co

IDA Business & Technology Park, Killygarry,
Cavan, Co. Cavan, Ireland

US Offices

t: +1 330-928-7744
f: +1 330-849-2977

e: sales@atataools.com
w: www.atagroup.co

ATA Tools Inc., 238 Marc Drive
Cuyahoga Falls, Ohio 44223

UK Offices

t: +44 (0) 1530 261 145
f: +44 (0) 1530 262 801

e: sales@atagroupuk.com
w: www.atagroup.co

ATA Grinding Processes Ltd, Spring Road, Ibstock,
Leicestershire, LE6 7 6LR, United Kingdom